

## Rise Angle R-A2100

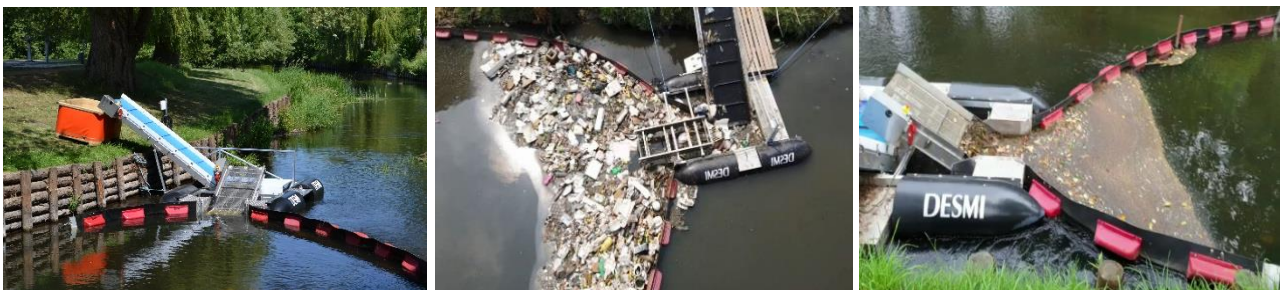
### Environment & Marine life friendly trash remover

Rise Angle R–A2100 is an automatic surface debris skimmer which facilitates the waste recovery directly on the waterway bank.

This smart skimmer with its sequential belt design is created to remove the marine debris with ease. The skimmer is powered by highly efficient electrical motors, causing negligible CO2 emissions during its operation.

The R–A2100 lifts the debris out of the water draining away free water and serves the purpose to collect & recover much of the floating surface debris when connected in conjunction with any proven DESMI boom.

The R–A2100 is an efficient waste recovery system that provide safe working condition for the operator, due to its high system reliability.



Samples pictures only

#### BASIC TECHNICAL SPECIFICATIONS

Frame Construction	Marine Grade Aluminium
Belt 1	SS Mesh Belt
Belt 2	PP modular
Belt speed	Variable 0.3 – 1.0 m/s
Fenders type	HDPE – Foam Filled
Connectors	Hinge connectors
Buoyancy	1100 kgs
Electrical motor	230 V – 1 phase

#### BASIC PHYSICAL PROPERTIES

Draught:	480 mm	Freeboard:	300 mm
Length:	4211 mm	Width:	4930 mm
Height:	2716 mm	Weight:	710 kg

#### ADVANTAGES

- |                                      |   |
|--------------------------------------|---|
| ✓ High quality materials             | ✓ Long lasting durability                           |
| ✓ Easy to assemble and operate       | ✓ User friendly                                     |
| ✓ Weather-proof electrical equipment | ✓ Low maintenance                                   |
| ✓ High efficiency                    | ✓ Direct impact on UN sustainable development goals |